

SMC7904WBRA-N2

4 Ethernet Ports ADSL2+ 11n Wireless Router



Product Overview

The SMC7904WBRA-N2 is a three-in-one wireless ADSL2/2+ router designed for Internet connectivity. It includes an ADSL modem, four Ethernet ports, and an 802.11n high-speed wireless function. The SMC7904WBRA-N2 supports the most up-to-date ADSL2/2+ standards to provide the best DSL performance, with up to 24 Mbps* downstream and 2 Mbps* upstream and a long-reach rate from your ISP's DSLAM site. Through its QoS and security features, the SMC7904WBRA-N2 can deliver high-quality video/audio streams without sacrificing security. The SMC7904WBRA-N2 is an ideal, cost-effective solution for ISPs and carriers with all its value services in one small box.

*ADSL speeds vary depending on individual contracts and services offered by ISPs, and distances from the ISP DSLAM.

Key Features and Benefits

Bridge/Router Mode

The SMC7904WBRA-N2 supports both a Bridge mode and Router mode. This means that the SMC7904WBRA-N2 can be operated within different ISP deployment plans.

High Security

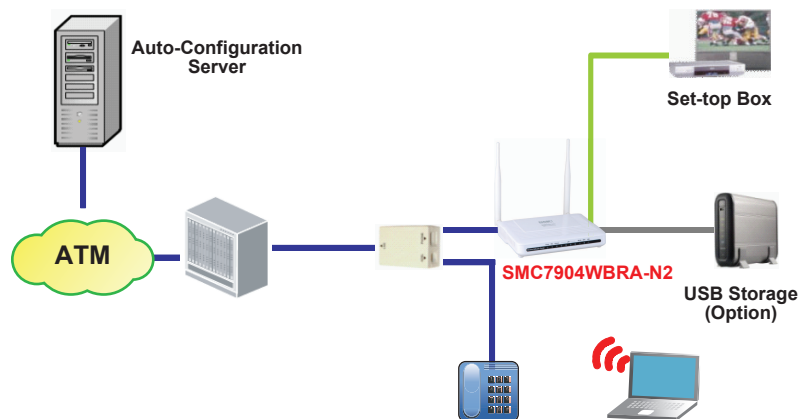
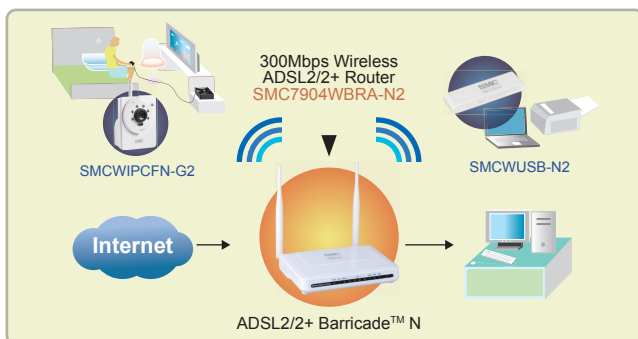
The SMC7904WBRA-N2 provides NAT/NAPT and firewall features. The firewall in the SMC7904WBRA-N2 supports not only IP/Port/MAC filtering functions, but also Stateful Packet Inspection (SPI). Virtual DMZ is also supported for providing servers for Internet users without jeopardizing private LAN security. In addition, Day/Time Parent Control is also supported to prevent children from accessing harmful web sites.

802.11n 2.4GHz Wireless with 2x2 MIMO and Multiple SSIDs

The SMC7904WBRA-N2 Wi-Fi solution is compliant with 802.11n draft v2.0 specifications. As a Wi-Fi AP/router, the SMC7904WBRA-N2 can achieve a 300 Mbps PHY rate using 11n MIMO 2x2 antennas. Multiple SSIDs are also supported, which enable the SMC7904WBRA-N2 to provide separate Wi-Fi networks for private and public use, without sacrificing security.

Easy Management

The SMC7904WBRA-N2 is TR-069 compliant, which allows an ISP to monitor and provision the SMC7904WBRA-N2 remotely. It is able to automatically upgrade firmware and other configuration settings from the ISP. This minimizes on-site maintenance and operation costs dramatically for individual devices.



Features

ADSL/ADSL2/ADSL2+ Modes

- ANSI T1.413 Issue 2 compliant
- ITU G.992.1 (G.DMT), ANNEX A compliant
- ITU G.992.2 (G.Lite), ANNEX A compliant
- ITU G.992.3 (ADSL2), ANNEX A, L, M compliant
- ITU G.992.5 (ADSL2+), ANNEX A, J, M compliant

ATM Protocols

- Support up to 8 PVCs
- ATM Forum UNI3.1/4.0 PVC
- ATM classes: UBR, CBR, rt-VBR, nrt-VBR
- ATM AAL5 adaptation layer
- PPPoA
- IP over ATM
- OAM F4/F5 Loopback

Routing

- VLAN
- SNTP
- DHCP Client/Server/Relay
- DNS, DDNS
- Static Route
- RIPV1/v2
- UPnP

Security

- NAT/NAPT
- Firewall
 - SPI
 - Port Forwarding
 - IP/Port/MAC Filtering
 - Virtual DMZ
- Access/Service Control List
- VPN Pass-through: L2TP, PPTP, IPsec
- Date/Time Parent Control

Management/Configuration/Tools

- Storage via USB port (Option)
- HTTP web management
- Telnet
- TR-069
- SNMP v1/v2c
- Configuration upload/download via HTTP
- Firmware upgrade via HTTP

Wireless Standards

- Compliant with IEEE 802.11n version 2 draft
- Operating Frequency: 2.4-2.5 GHz
- Wi-Fi MIMO: 2 x 2
- Operating Channel: 13 channels
- 802.11n Data Rates: 300, 270, 243, 216, 162, 108, 81, 54, 27 Mbps (40 MHz)
- 802.11g Data Rates: 6, 9, 12, 18, 24, 36, 48, 54 Mbps
- 802.11b Data Rates: 1, 2, 5.5, 11 Mbps

Wireless Features

- WEP
- WPA/WPA2-PSK
- IEEE 802.1X
- WPS – PIN
- WMM QoS
- Wireless MAC Filtering
- WDS
- Multiple SSIDs (Up to 4)

Physical Ports

- WAN: 1 RJ-11 DSL port
- LAN: 4 Fast Ethernet ports
- WLAN Button: 1
- WPS Button: 1
- Reset Button: 1
- Power On/Off: 1
- Power: 1 DC-in jack
- Wi-Fi Antenna: 2 detachable, 5dBi
- USB 2.0 Host: 1 (option)

Mechanical

- Dimensions (H x W x D): 18.2 cm x 11.2 cm x 2.4 cm
- White Box: Outside dimensions 25 cm x 20 cm x 7.1 cm
- Device Weight: 309 g

Power

- AC Input: 100~240V
- DC Output: 12V/1A

Regulatory Compliance

- CE Mark
- Wi-Fi Certified

Environmental Specifications

- Temperature:
 - 0°C ~ 40°C/32°F ~ 104°F (Standard Operating)
 - 20°C ~ 70°C/-4°F ~ 158°F (Non-operation)
- Humidity: 5% to 95% (Non-condensing)

Warranty

Please check www.smc.com for the warranty terms in your country.

Contact

Worldwide Corporate and Sales Headquarters
No. 1 Creation Road III,
Hsinchu Science Park,
30077, Taiwan, R.O.C.
Tel: +886 3 5638888 Fax: +886 3 6686111

Singapore
1 Coleman Street
#07-09, The Adelphi
Singapore 179803
Tel: 65-63387667 Fax: 65-63387767

Check www.smc-asia.com for your local country contact information

Europe/Africa
C/Fructuós Gelabert 6-8 2º, 2ª,
Edificio Conata II,
08970 Sant Joan Despí
Barcelona - Spain
Phone: +34 93 477 4920

Check www.smc.com for your local country contact information

©2012 SMC Networks. EZ Switch™ is a trademark of SMC Networks. Other trademarks or registered trademarks are the property of their respective owners. Information is subject to change without notice. All rights reserved.

Ordering Information

System Requirements

- Broadband (DSL) Internet service
- Ethernet adapter and cable for each computer Windows® 98SE, Me, NT, 2000, XP, Vista, Windows 7 or other operating systems running a TCP/IP network
- Internet Explorer 6.0, Netscape® 4.7 or higher, or Firefox

Product Description

- SMC7904WBRA-N2
(4 Ethernet Ports 802.11n 2x2 ADSL2+ Wireless Router)
- Power Adapter
- User Manual (CD)
- Quick Installation Guide
- 1 RJ-11 Cable
- 1 RJ-45 Cable
- 1 ADSL Filter