



SMCGS5 / SMCGS8

EZ Switch™ 10/100/1000 Standalone 5/8-port 10/100/1000 Unmanaged Switch

OVERVIEW

The SMC family of EZ Switch™ 10/100/1000 Gigabit Ethernet Switches is the perfect solution for bottlenecks in your home or SOHO network. Bottlenecks are the inevitable result when many computers are connected and when data-intensive applications like home movies or digital images are used. SMC's EZ Switches provide a seamless migration to higher-speed networking while solving bandwidth issues. They are designed to allow simultaneous transmission of multiple packets via high-speed data channels.

These unmanaged, gigabit switches are designed for Plug-and-Play installation, featuring auto-MDIX on every port. This means that no crossover cables are required. Every port can either be connected to a PC or another switch for network expansion. Meeting today's diverse networking needs at an attractive price per port, SMC's EZ Switch™ 10/100/1000 Switches are ideal for bringing speed and bandwidth to the desktop at home or in the office.

KEY FEATURES

Support to handle Jumbo Packets

With Jumbo frame support, this switch has faster and more efficient packet forwarding.

Auto-MDIX ports

No crossover cables required, pure plug and play for easy operation.

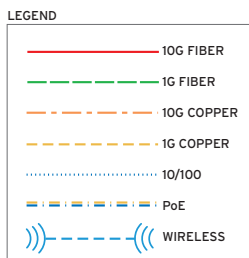
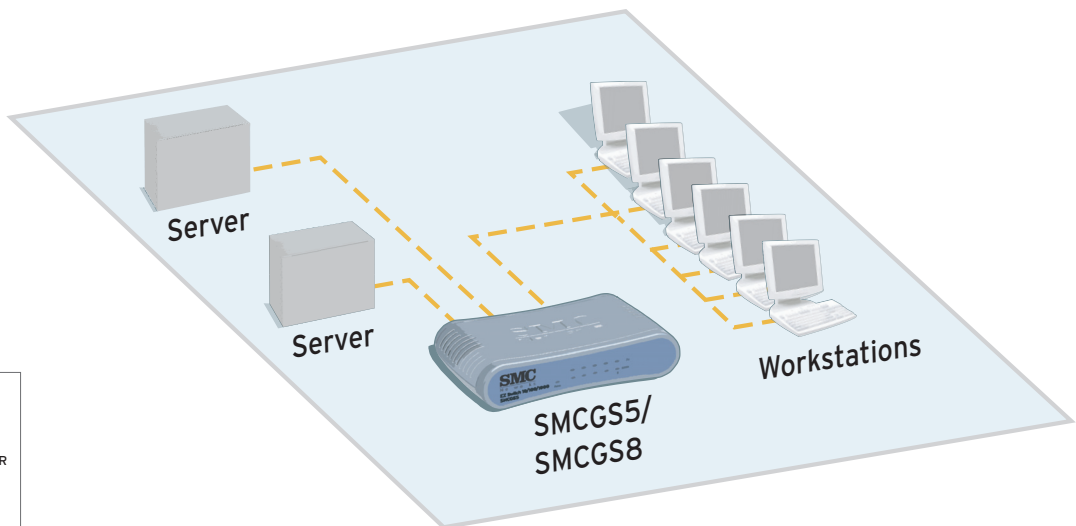
Attractive chassis

The compact, plastic chassis is light and is ideal for desktop applications. In addition, the lack of fans ensures silent operation.

LED indicators

Simple, at-a-glance LEDs to see port status and for simple trouble-shooting.

APPLICATION DIAGRAM



TECH SPECS - SMCGS5 / SMCGS8

PORTS

- SMCGS5
 - 5 x 10/100/1000 BASE-T
 - DC power socket
- SMCGS8
 - 8 x 10/100/1000 BASE-T
 - DC power socket

LED

- System: Power
- Port: Link/activity, 1000M

SWITCH FABRIC

- SMCGS5
 - 10Gbits
 - 7.4Mpps
- SMCGS8
 - 16Gbits
 - 11.9Mpps

BUFFER ARCHITECTURE

- SMCGS5
 - 112Kbyte
- SMCGS8
 - 144Kbyte

SWITCHING DATABASE

- 8K MAC address entries

NETWORK INTERFACE

- 10Base-T, UTP/ STP category 3 or 5 cable
- 100Base-TX UTP/ STP category 3 or 5 cable
- 1000Base-T, UTP/ STP category 5 cable, 4 pairs

POWER CONSUMPTION

- All 9 Watts

DIMENSIONS

- SMCGS5
 - 14.7 x 9.0 x 3.2 cm
 - 5.71 x 3.52 x 1.27 in
- SMCGS8
 - 18.9 x 9.0 x 3.7 cm
 - 7.4 x 3.5 x 1.47 in

WEIGHT

- SMCGS5
 - 165g
 - 0.33lbs
- SMCGS8
 - 285g
 - 0.58lbs

HUMIDITY

- 5% to 95% non-condensing

TEMPERATURE

- Operating
 - 0 ~ 40 °C
 - 32 ~ 98 °F
- Storage
 - -40 ~ 70 °C
 - -40 ~ 158 °F

EMC/SAFETY COMPLIANCES

- CE Mark

EMISSIONS

- FCC Class B, CISPR Class B, EN 61000-3-2/3

COMPATIBILITY

- IEEE802.3
- IEEE802.3u
- IEEE802.3ab
- IEEE802.3x

IMMUNITY

- EN 61000-4-2/3/4/5/6/8/11

SAFETY

- CSA/NRTL (CSA60950-1 & UL60950-1)
- TUV/GS (EN60950-1)

WARRANTY

- Please check www.smc.com for the warranty terms in your country/region

CONTACT

North America
 20 Mason
 Irvine, CA 92618
 1-800-SMC-4YOU
 24/7 Technical Support

Europe/Africa
 Fructuos Gelabert 6-8
 08970 Sant Joan Despí
 Barcelona, Spain

Check www.smc.com for your local country contact information

© 2009 SMC Networks. SMC and the SMC logo are registered trademarks of SMC Networks in the United States or other countries. Other trademarks or registered trademarks are the property of their respective owners. Information is subject to change without notice. All rights reserved.

2/2009